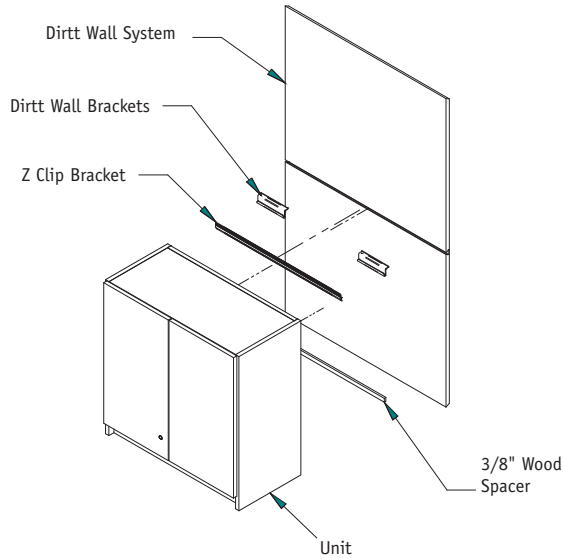


## Assembly Instruction

Figure A

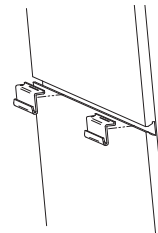


1

Insert Dirtt Wall Bracket into Dirtt Wall System by tilting upward with the hook end down (Figure B).

**Note:** Ensure that the Bracket is fully installed and stable before hanging the cabinet.

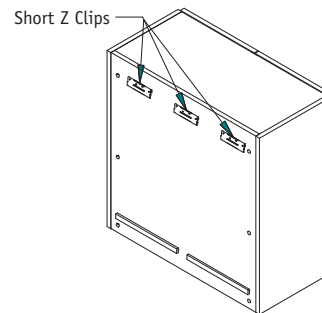
Figure B



2

Use power driver to remove the existing shorter Z clips from the overhead cabinet (Figure C).

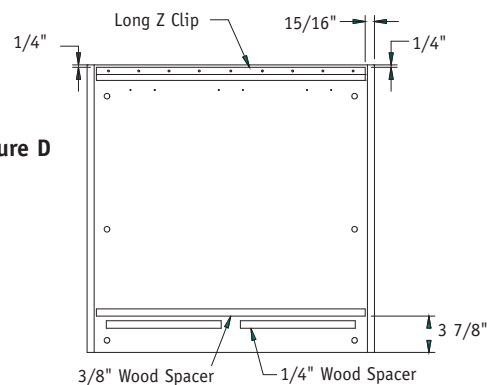
Figure C



3

Use a power driver #8 x 5/8" screws to attach the long Z Clip 1/4" from top of the overhead and 15/16" from the end (Figure D).

Figure D



4

Apply double sided tape to the 3/8" wood spacer. Attach the spacer above the existing 1/4" wood spacer 3 7/8" from the bottom and centered on the back of the overhead (Figure D).

## Dirtt Wall Assembly

### Recommended Tools

- Tape Measure or Ruler
- Powered Screw Driver
- #2 Phillips Bit

### Package Contents Qty.

- #8 x 5/8" Panhead Screws Per Order
- Z Clip Bracket Per Order
- Dirtt Wall Bracket Per Order
- 3/8" Wood Spacer Per Order
- Double Side Tape Per Order
- Corner Higher 1

# NATIONAL

Furniture with Personality®

Telephone 800.482.1717  
 Fax 812.482.8800  
 www.NationalOfficeFurniture.com

Part #2495923  
 Rev,A

Printed in U.S.A  
 © 2013 Kimball International, Inc.

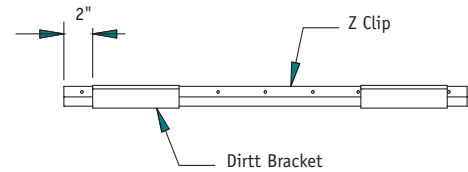
Proper product installation, in accordance with these instructions, is the responsibility of the installing agent. If you have any questions concerning these instructions, please call National Customer Service.

## Assembly Instructions

### Dirtt Wall Assembly

- 5** Ensure that the Dirtt Brackets are 2" from the end of the Z clip and evenly spaced for proper support (Figure E).

Figure E



- 6** Hang the overhead by engaging the Z Clip into the Dirtt Bracket (Figure F).

**Note:** Engure that both Dirtt Brackets are engaged the full length of the bracket and the Z Clip is set fully down on the Dirtt Bracket.

Figure F

