

ASSEMBLY INSTRUCTIONS

1

NOTE: Reference Chart for proper placement of base on to the worksurface.
rectangle Surfaces reference sizes 24 and 30.
L-Shape Surfaces reference 24 size only.

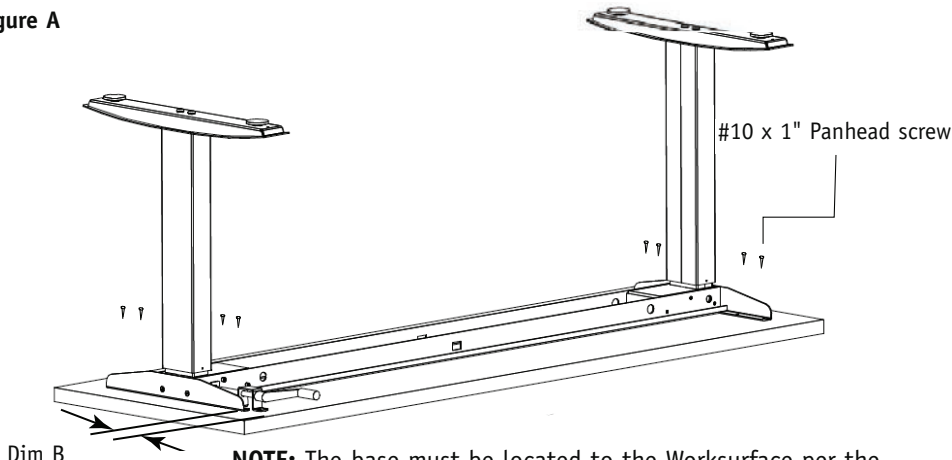
Surface Placement Chart

SURFACE SIZE	FROM CENTERLINE OF BASE - DIM. A	FROM EDGE OF SURFACE SUPPORT BRACKET - DIM. B
24"	12 INCHES	3 3/8 INCHES
26" K1 - KNIFE EDGE 1 SIDE	13 1/2 INCHES	4 7/8 INCHES
27" K2 - KNIFE EDGE 2 SIDES	13 1/2 INCHES	4 7/8 INCHES
30"	15 INCHES	3 3/8 INCHES
32" K1 - KNIFE EDGE 1 SIDE	16 1/2 INCHES	4 7/8 INCHES
33" K2 - KNIFE EDGE 2 SIDES	16 1/2 INCHES	4 7/8 INCHES

2

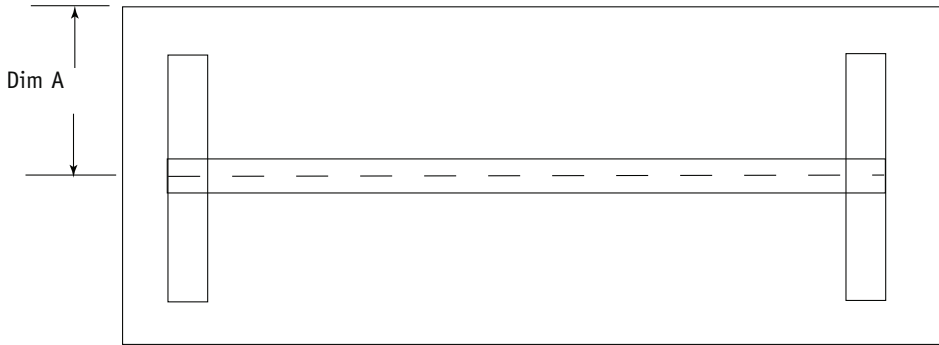
Place worksurface face down on a smooth, clean dry area. Using the placement chart position the base. Attach the base with eight (8) #10 x 1" Pan Head Screws. **Note:** L-base units use twelve (12). Reference Fig A and or Fig B.

Figure A



NOTE: The base must be located to the Worksurface per the Surface Placement Chart for the crank to clear the edge of the Worksurface and function proper.

Figure B



Adjustable Height Base

Recommended Tools

- Square
- Phillips Head Screwdriver
- Tape Measure

Package Contents	Qty.
• #10 x 1" Panhead screw	per-order

NATIONAL
Furniture with Personality®

Telephone 800.482.1717
Fax 812.482.8800
www.NationalOfficeFurniture.com

Part #2498418
Rev,-

Printed in U.S.A.
© 2013 Kimball International, Inc.

Proper product installation, in accordance with these instructions, is the responsibility of the installing agent. If you have any questions concerning these instructions, please call National Customer Care Teams.