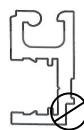
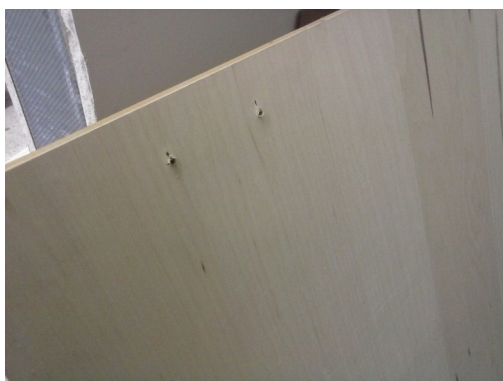


CASEGOODS

For Use With Existing Exhibit Rail Setups With NO Notch Behind Wall Rail



- 1** Remove Flat Brackets from back face of panel, or slat wall using phillips screwdriver.



Back Of TV Mount Or Organizer Shelf Back Panel

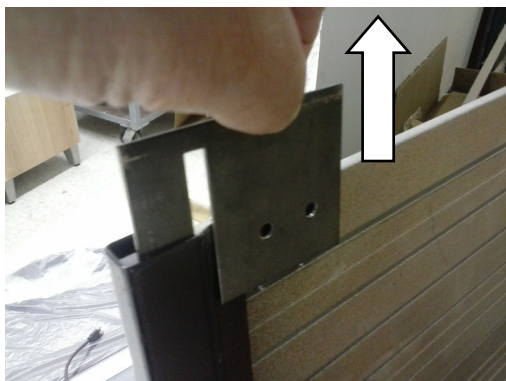
Slat Wall, Slat / Tack Combo, Organizer Shelf, TV Mount Insert Panels

Tools Required:

- Phillips Screwdriver
- 3/32" Diameter Drill Bit

Pack:

- L-Brackets 2
- PHP #6 X 1/2" Screws 4



Back Of Slat Wall or Slat/Tackboard Combo

NOTE: Slat /Tackboard bracket uses double face tape to secure, no screws are used to secure bracket in place.

NATIONAL

Furniture with Personality[®]

Telephone 800.482.1717
 Fax 812.482.8800
www.NationalOfficeFurniture.com

Part # 2727934
 Rev. -

Printed in U.S.A
 © 2015 Kimball International, Inc.

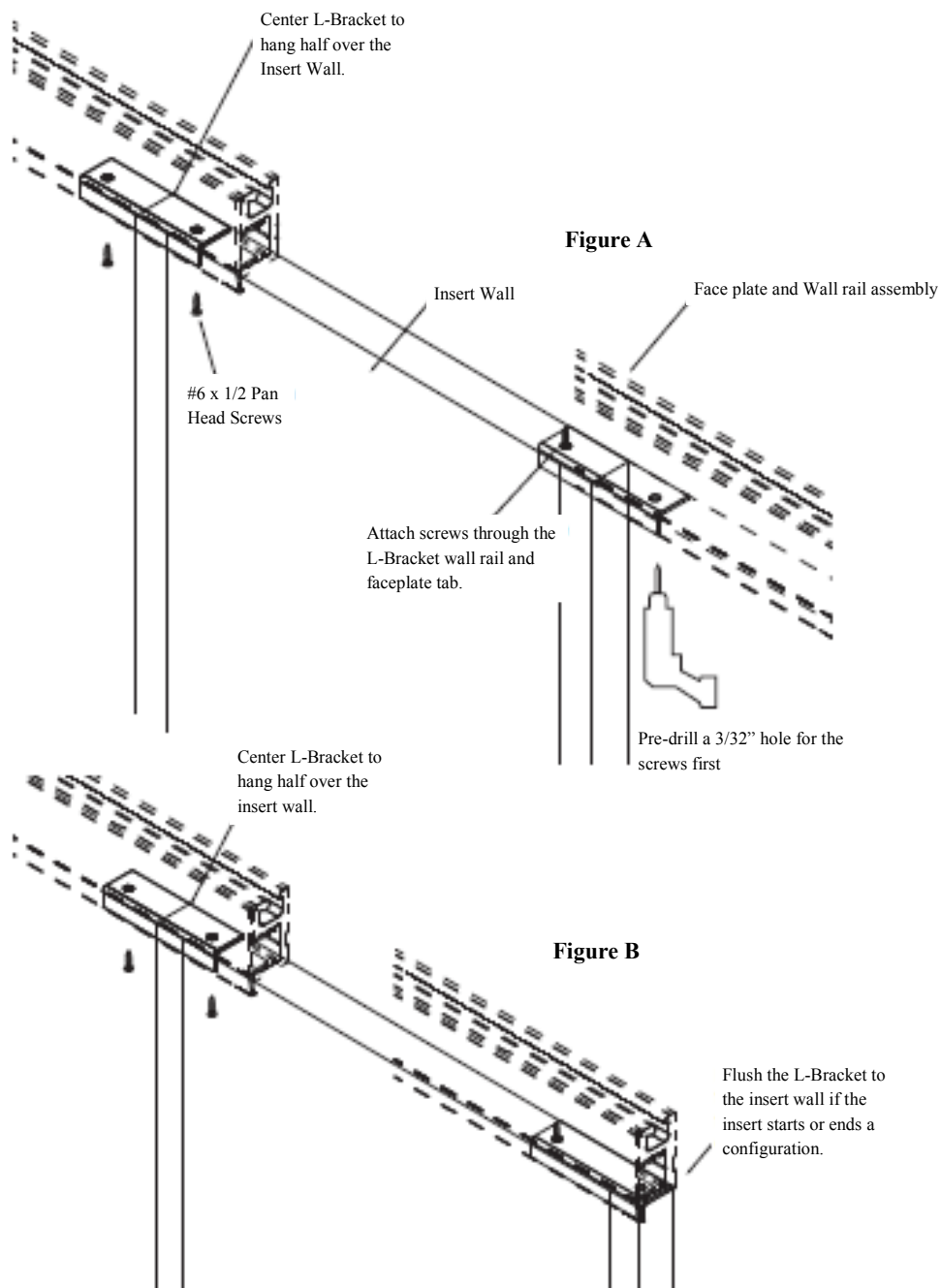
Proper product installation, in accordance with these instructions, is the responsibility of the installing agent. If you have any questions concerning these instructions, please call National Customer Service 800.482.1717.

CASEGOODS

NOTE: Faceplate should be installed on the upper wall rail. L-brackets are to be centered with half of the L-bracket over the slat wall or panel insert (Figure A). If the insert is the first or the last unit then the L-bracket on the end is to be flush to that edge of the insert or panel insert (Figure B).

Slat Wall, Slat / Tack Combo, Organizer Shelf, TV Mount Insert Panels

- 2** Once brackets have been removed, position L-bracket in desired location. Pre-drill a 3/32" hole per screw, attach the L-bracket with two (2) #6 X 1/2" pan head screws per bracket (Figure A).



Proper product installation, in accordance with these instructions, is the responsibility of the installing agent. If you have any questions concerning these instructions, please call National Customer Service 800.482.1717.

NATIONAL

Furniture with Personality®

Telephone 800.482.1717
 Fax 812.482.8800
www.NationalOfficeFurniture.com

Part # 2727934
 Rev. -

Printed in U.S.A.
 © 2015 Kimball International, Inc.

NOTE: Faceplate should be installed on the upper rail.

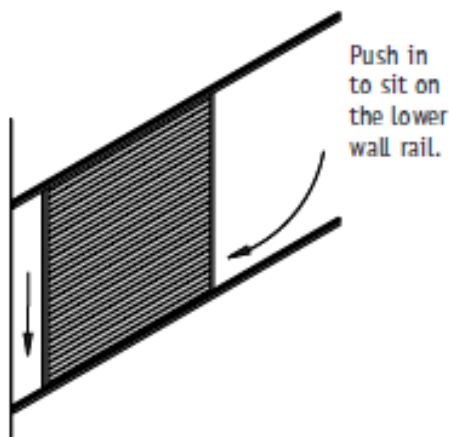
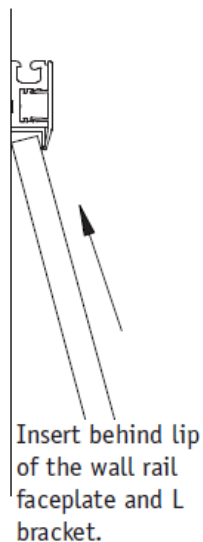
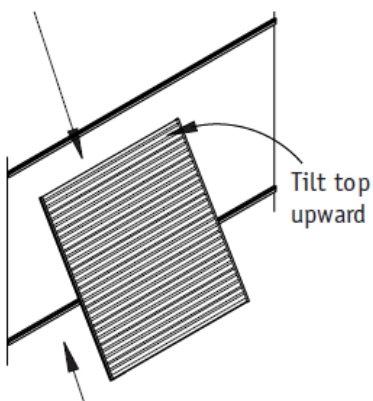
Organizer Shelf Units—Shelves should be installed on units prior to wall installation.

CASEGOODS

Slat Wall, Slat / Tack Combo, Organizer Shelf, TV Mount Insert Panels

- 3** Tilt top of insert forward and engage top of insert behind the lip of the upper wall rail faceplate and the L bracket (Figure C). Push the bottom of the insert into engage it onto the lower rail (Figure D).

Engage the insert behind the upper wall rail faceplate and L bracket.



- 4** Engage all inserts to complete the configuration. Install the lower faceplate onto the lower wall rail. Check faceplate and wall rail alignment to ensure there are no gaps.

Proper product installation, in accordance with these instructions, is the responsibility of the installing agent. If you have any questions concerning these instructions, please call National Customer Service 800.482.1717.

NATIONAL

Furniture with Personality[®]

Telephone 800.482.1717
Fax 812.482.8800
www.NationalOfficeFurniture.com

Part # 2727934
Rev. -

Printed in U.S.A.
© 2015 Kimball International, Inc.