

**1**

**Note:** These instructions explain basic installation of Cylinder legs, wood square bases to worksurfaces. For safety purposes, it is recommended that more than one person be used to move worksurfaces and/or assembled tables.

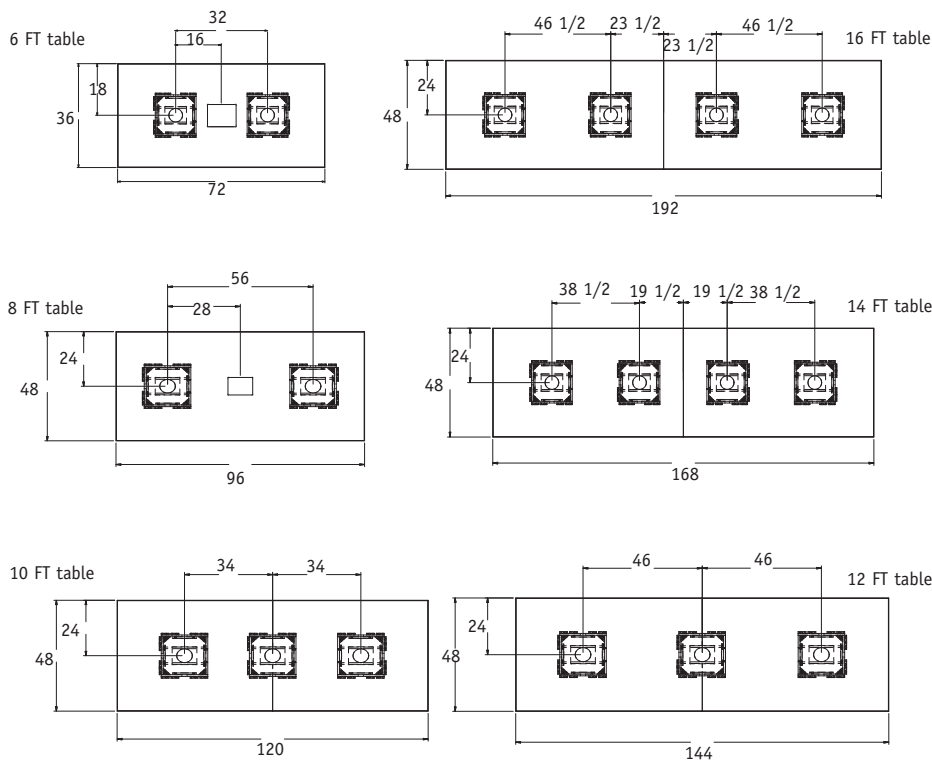
Unpack the worksurface, place it face down on a smooth, hard surface. Take care to not damage the finished side of the worksurface.

**2**

Determine the length of the worksurface, use the tape measure to mark the position of each leg or base using the dimensions shown in (Figure A).

**Note:** The dimensions along the long edges of the worksurfaces are to the CENTERS of the bases.

**Figure A**



## Conference and Training Solutions Attaching Bases to Conference Tables

### Recommended Tools

- Screw Gun
- Tape Measure or Ruler
- Phillips Bit
- Pencil

Package Contents	Qty.
• #8 x 1 1/2" Panhead Screws	Per Order

**NATIONAL** | Furniture with Personality™

Telephone 800.482.1717  
Fax 812.482.8800  
www.nationalofficefurniture.com

Part #2106944  
Rev,-

Printed in U.S.A  
© 2008 Kimball International, Inc.

Proper product installation, in accordance with these instructions, is the responsibility of the installing agent. If you have any questions concerning these instructions, please call National Customer Service.