

Universal Wall Mount  
Extrusion Installation

1

WALL MOUNT EXTRUSION INSTALLATION

The top of the extrusion will be flush with the top edge of the overhead. This will aid in installing at the correct height. Mark the desired height and use a level to insure a level reference line.

2

Align the top of the extrusion with the reference line and attach the extrusion to the wall using appropriate fasteners (installer-provided) for the type of wall the overhead will be suspended from (Figure A).

**NOTE:** Extrusion needs to be pre-bored by installer due to the varying types of walls the extrusion can be fastened to.

FIGURE A

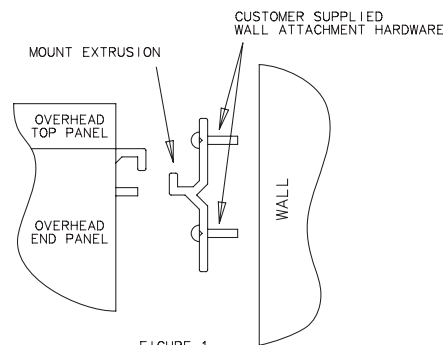
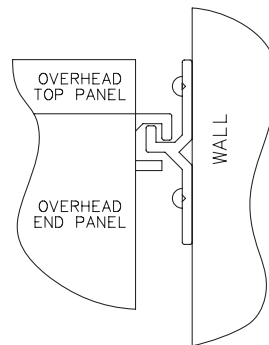


FIGURE 1

3

Hang the overhead on the wall extrusion and adjust leveling glides to align unit with wall (Reference installation sheet with overhead unit) (Figure B).

FIGURE B



**WARNING:** The hardware on the overhead has been pre-installed at the factory for your convenience and safety. If, for any reason, the hardware needs to be removed, be sure it is re-installed in the same location and in the same orientation. Under no circumstances should this hardware assembly be mounted anywhere else on the unit.

Recommended Tools

- Tape Measure
- Level
- Electric Screwdriver

**NATIONAL**

Furniture with Personality®

Telephone 800.482.1717  
Fax 812.482.8800  
www.nationalonline.com

Part #1847191

Printed in U.S.A  
© 2006 Kimball International, Inc.

Proper product installation, in accordance with these instructions, is the responsibility of the installing agent. If you have any questions concerning these instructions, please call National Customer Service.

# CASEGOODS

Assembly Instructions

## Universal Wall Mount Extrusion Installation

Recommended Fastener	Size	Model No.
Steel Stud (for 1/2" to 3/4" drywall)  Hilti Toggler anchor toggle bolt	1/4"-20 x 2" Grade 5, Grade 5 equivalent or greater bold with a miximum head height of .134"	374494
Wood Stud (for 1/4" to 1/2" drywall; meets or exceeds ANSI/ASME B18.6.4 and SAE J933):  Panhead sheet metal screw		10-2 PHPMS
Solid Masonry:  Crown Bolt lag shields Buildex Tapson concrete anchor screw	1/4" x 1 1/2" 1/4" x 2 3/4"	24385
Masonry Block:  Hilti Toggler anchor toggle bolt	1/4"-20 x 2" Grade 5, Grade 5 equivalent or greater bold with a miximum head height of .134"	374494
Crown Bolt lag shields Buildex Tapcon concrete anchor screw	1/4" x 1 1/2" 1/4" x 2 3/4"	24385

Proper product installation, in accordance with these instructions, is the responsibility of the installing agent. If you have any questions concerning these instructions, please call National Customer Service.