

## Assembly Instruction

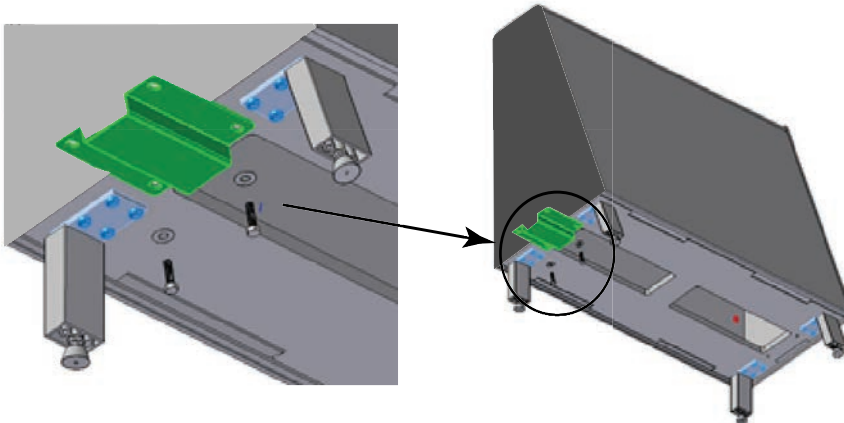
### Gangging Installation

**Note:** Attach tables prior to gangging.  
Install electrical into the top of the spine/s prior to gangging.  
Make all electrical connections in each spine prior to gangging.  
Recommended two or more persons be used to move, align, and gang together.

**1**

Position and level all gangging models in the desired layout configuration and location. Attach each required gangging bracket to the first joining model using, two (2) flat 3/4" washers, two (2) 1/4"-20x3/4 hex head bolts (Figure A).

Figure A



Hand tighten at this point so alignment can be adjusted if needed.  
See the gangging bracket location per model (Figure B).

#### Recommended Tools

- Socket Wrench
- 7/16 Socket
- Level

Package Contents	Qty.
1/4-20x3/4 Hex Head Bolts	
	Per Order
Gangging Bracket/s	
	Per Order
3/4 Flat Head Washer	
	Per Order

NATIONAL | Furniture with Personality™

Telephone 800.482.1717  
Fax 812.482.8800  
[www.nationalofficefurniture.com](http://www.nationalofficefurniture.com)

Part #2879041  
Rev,-

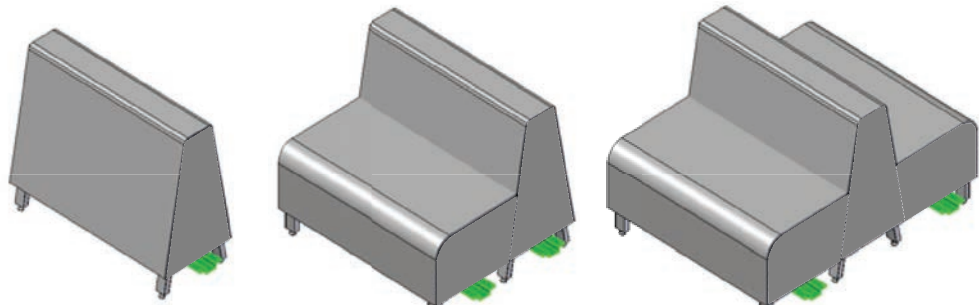
Printed in U.S.A  
© 2017 Kimball International, Inc.

Proper product installation, in accordance with these instructions, is the responsibility of the installing agent. If you have any questions concerning these instructions, please call National Customer Service.

# Assembly Instruction

## Ganging Installation

Figure B



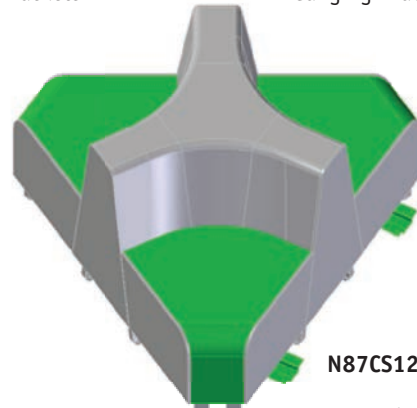
**N87AAA36**  
1 Ganging Bracket

**N87AS1A36**  
2 Ganging Brackets

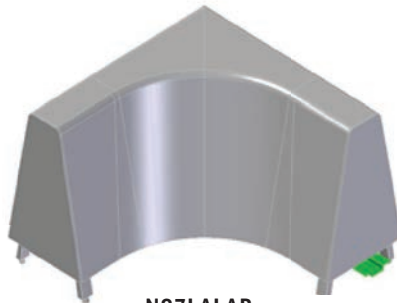
**N87AS2A36**  
2 Ganging Brackets



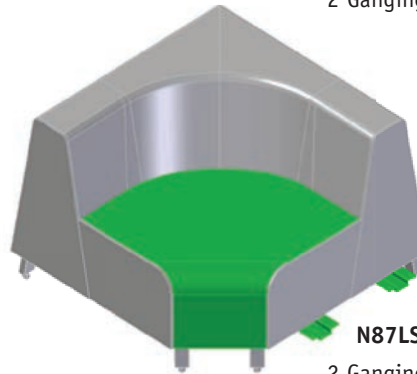
**N87C120**  
1 Ganging Bracket



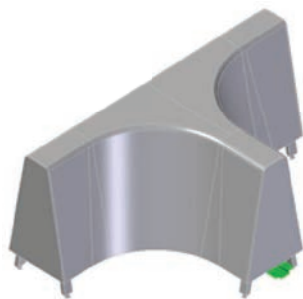
**N87CS120**  
2 Ganging Brackets



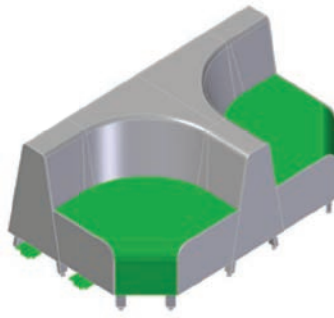
**N87LALAR**  
1 Ganging Bracket



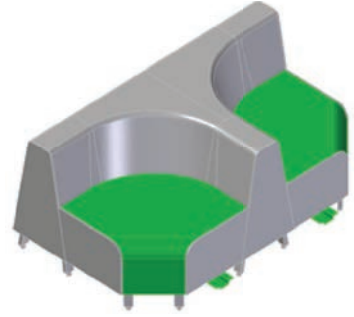
**N87LSALAR**  
2 Ganging Brackets



**N87TA**  
1 Ganging Bracket



**N87TSA** option #1  
2 Ganging Brackets

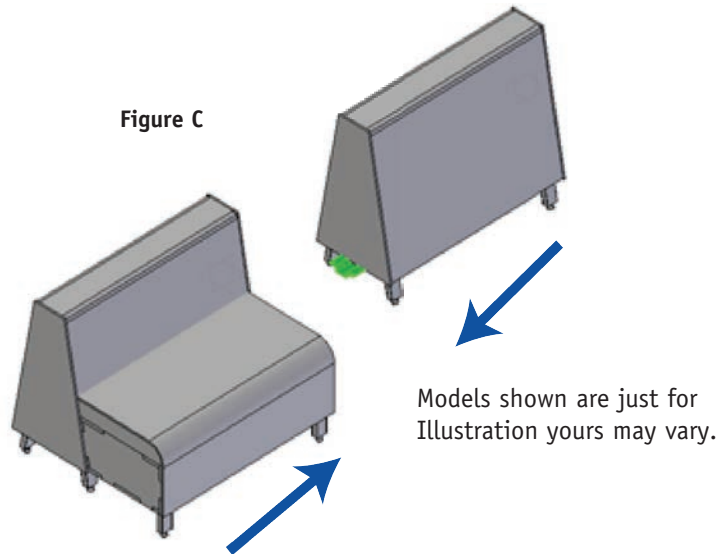


**N87TSA** option #2  
2 Ganging Brackets

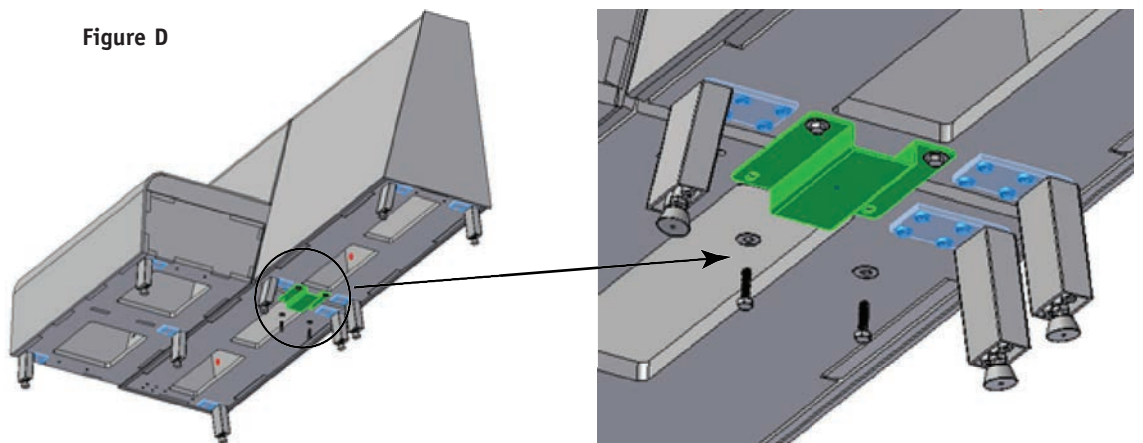
## Assembly Instruction

### Gangng Installation

- 2** Align the first gangng model to the second jointing model (Figure C).



- 3** Align the gangng bracket to the gangng bracket holes on the bottom of the next gangng model. Attach gangng bracket to the next jointing model using, two (2) Flat 3/4" washers, two (2) 1/4"-20x3/4 hex head bolts into the threaded holes (Figure D). Only hand tighten at this time. Use hand clamps to pull legs together if needed to position each model into the proper gangng location.



- 4** Position, align and level ganged models in the desired location. Then tighten all bolts with a 7/16 socket. Continue these steps for multiple ganged models.