

---

# TARVER

Product Specifications	160
Product Options	161
Product Pages	171

## TARVER PRODUCT SPECIFICATIONS

### TOPS

- Laminate surfaces are 1 $\frac{1}{8}$ " HPL (high pressure laminate) and feature a matching 3mm softened PVC rim
- Veneer surfaces are 1 $\frac{1}{8}$ " plain sliced slipmatched cherry (Amber, Autumn, Mocha, Truffle), maple veneer (Brighton, Caramel, Honey, Natural), plain sliced bookmatched walnut veneer (Clear Walnut, Cordovan, Judicial), quarter cut walnut veneer (Almond, Portobello, Sable), quarter cut oak veneer (Sonoma), plank matched white oak veneer (Almond Rustic Oak, Clear Rustic Oak, Mocha Rustic Oak, Portico Rustic Oak, Portobello Rustic Oak, Sable Rustic Oak, Skyline Rustic Oak, Truffle Rustic Oak) and feature a matching 3mm softened wood rim
- When specifying Clear Walnut, a clear coat finish, the natural wood characteristics of walnut veneer are visible. These characteristics include, but are not limited to, color and woodgrain variation
- When specifying Clear Rustic Oak, a clear coat finish, the natural wood characteristics of white oak veneer are visible. These characteristics include, but are not limited to, color and woodgrain variation
- Grain direction runs left-to-right unless otherwise noted

### TRESTLE BASE

- All bases consist of solid wood and metal components with visible fillet welds
- Wood is solid maple (Amber, Autumn, Brighton, Caramel, Cordovan, Honey, Judicial, Mocha, Natural, Sable, Truffle, Portobello, Sonoma, or Acorn/Almond), Painted solid maple (Designer White, Concrete, Cloud, Fog, Storm, Graphite, Cinder, Iron, Frosty White, Platinum Metallic, Satin Nickel) or solid white oak (Almond Rustic Oak, Clear Rustic Oak, Mocha Rustic Oak, Portico Rustic Oak, Portobello Rustic Oak, Sable Rustic Oak, Skyline Rustic Oak, Truffle Rustic Oak)
- Metal is available in paint colors shown on page 161
- Wire management is standard through conference bases

### FINISH APPLICATION

- Veneer tops and vertical surfaces will feature a semi-open pore matte finish

### BUFFET CREDENZAS

- Available in laminate or veneer
- Buffet credenzas have a single finish option with a matching 3mm softened PVC rim
- $\frac{3}{4}$ " thick (19mm) worksurface
- Hinges and pulls available in (MB) Matte Black only
- Leveling glides are in black
- Doors feature a "shaker" style construction

### MOBILE MARKER BOARD

- Magnetic marker board writing surface

### CASTERS

- Black aluminum 4" diameter wheel with a black polyurethane tread
- Each caster has a single braking wheel

## POWER/DATA ELECTRICAL SPECIFICATIONS

### ROUND GROMMET (G10)

- NACG10EL features 2 120 volt receptacles and 2 Cat5E data ports and 6' AC cord rated at 15 amps; data ports are not pre-wired
- Field installable
- For conference tables only
- Black nylon
- 8 adapter plates are provided

### DOUBLE PIVOTING M2X-B POWER GROMMET (G15A, G15B)

- Accommodates table thicknesses of  $\frac{3}{4}$ "-1 $\frac{3}{4}$ "
- 1 touch door remains open during use
- 2 6 ft. power cords with 3-prong molded plug for each side
- Spill-proof
- Available in silver, black or white powder coat
- Hardwire/Chicago Code available
- Corded units (standard and hardwire) have 2 72" long power cords (1 for each side) rated at 15 amps 120 volts
- Grommet comes with undersurface wire managers attached underneath conference top
- Field installable into a CUT-G15 (must be ordered)
- UL Listed
- G15A SIDE 1: 2 power outlets, 1 dual USB-A port, 1 HDMI and 1 blank data port SIDE 2: 2 power outlets, 1 dual USB-A port, 1 VGA and 1 blank data port
- G15B SIDE 1: 2 power outlets, 1 blank data port, 1 HDMI, and 1 USB A + C combo SIDE 2: 2 power outlets, 1 blank data port, 1 VGA and 1 USB-A + C combo

### GLENBEIGH PIVOTING POWER GROMMET (G17A, G17B, G17C)

- Accommodates table thickness of  $\frac{3}{4}$ "-1 $\frac{3}{4}$ "
- 10 ft. power cord with 3-prong molded plug
- Spill-proof
- Available in silver, black or white powder coat
- Hardwire/Chicago Code available
- 15 amp, 120v (hardwire models)
- 10 ft. metal conduit (hardwire models)
- UL Listed
- G17A available with 2 power outlets
- G17B available with 1 power outlet and 1 USB-A + C combo port
- G17C available with 1 power outlet

### POWER GROMMET (G23)

- Field installable when CUT-G23 option is specified
- Die-cast zinc in black or silver powder coat
- Includes 2 power outlets and 2 power USB ports
- Silver, black, or white
- Hardwire available
- 9 foot, 15 amp cord
- UL Listed

**PULL OPTIONS**



**Foursquare**

MB Matte Black

**HARDWARE PAINT**

MB Matte Black

**WOOD FINISHES**

AC	Autumn	MHRO	Mocha Rustic Oak
AD	Almond	NM	Natural
ADRO	Almond Rustic Oak	PB	Portobello
CL	Caramel	PBRO	Portobello Rustic Oak
CW	Cordovan	PTRO	Portico Rustic Oak
DW	Judicial	SKRO	Skyline Rustic Oak
ERO	Clear Rustic Oak	SM	Sonoma
EW	Clear Walnut*	TF	Truffle
HN	Honey	TFRO	Truffle Rustic Oak
IM	Brighton	792	Sable
MC	Amber	792RO	Sable Rustic Oak
MH	Mocha		

\*Clear Walnut not available on bases. Select AD Almond for the base coordinate

**LAMINATE COLORS**

**WOODGRAIN LAMINATE**

AC2	Autumn 2
AD	Almond
CL	Caramel
CW	Cordovan
DW	Judicial
HN2	Honey 2
IM	Brighton
MC	Amber
MH	Mocha
NM	Natural
PB	Portobello
PT	Portico
SK	Skyline
SM	Sonoma
TF	Truffle
792	Sable
793	Acorn*

**SOLID LAMINATE**

405	Designer White
419	Wallaby
425	Shadow
440	Cloud
461	Graphite
462	Cinder
478	Platinum Grey
488	Frosty White
491	Designer White Linear
492	Cinder Linear

**GALLERY LAMINATE**

Grade 1 – 5% upcharge	
G1001	Citadel
G1011	Pepperdust
Grade 2 – 6% upcharge	
G1002	Planked Raw Oak
G1003	Evening Notte
G1004	Kirsche
G1005	Midnight Run
G1006	Sepia Walnut
G1007	Serotina
G1008	Timeless
G1009	White Nebbia
G1012	Phantom Ecru

See page 18 for Gallery program details and upcharges

\*Acorn is the laminate complement to Clear Walnut finish

**METAL AND WOOD BASE PAINT COLORS**

405	Designer White
423	Concrete
440	Cloud
450	Fog
460	Storm
461	Graphite
462	Cinder
463	Iron
488	Frosty White
501	Platinum Metallic
503	Satin Nickel
EM	Clearcoat on Metal**

- The following paint colors will receive black screws: satin nickel, cinder, iron, graphite, concrete, and clearcoat on metal
- The following paint colors will receive silver screws: platinum, storm, cloud, frosty white, designer white, and fog

\*\* Clearcoat is only available as a paint option on metal, not a wood paint option

## GROMMET AND CUTOUT OPTIONS

Conference table tops are available with grommet or cutout options to accommodate electrical and data management solutions. If no grommet or cutout is desired, specify an X.

### Round Grommet Option, Black

\$75 list upcharge per grommet location

- G10C Center
- G10E End
- G10LR Left, Right
- G10A All
- G10CE Center, End

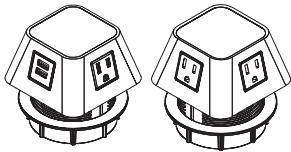


- Reference pages 163-164 for grommet locations



**NACG10EL  
(Sold Separately)**

- NACG10EL electrical grommet is available as a substitute for G10 grommet, if desired
- Reference page 546 for pricing and details



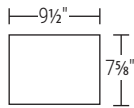
**NACG10AELPGB, NACG10AELPGW,  
NACG10AELPGG, NACG10BELPGB,  
NACG10BELPGW, and NACG10AELPGG  
(Sold Separately)**

- NACG10A and NACG10B power/USB grommet is available as a substitute for G10 grommet, if desired
- Reference Electrical Addendum for pricing and details

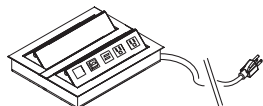
### Cutout Option for 1 Touch Double Pivoting Power Grommet

\$25 list upcharge per cutout location

- CUT-G15C Center
- CUT-G15E End
- CUT-G15LR Left, Right
- CUT-G15A All
- CUT-G15CE Center, End



- Reference pages 165-166 for cutout locations of CUT-G15



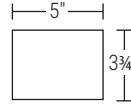
**NACG15AELPGS, NACG15AELHCS,  
NACG15AELPGB, NACG15AELHCB,  
NACG15AELPGW, and NACG15AELHCW  
(Sold Separately)**

- Must order model NACG15AELPGS, NACG15AELHCS, NACG15AELPGB, NACG15AELHCB, NACG15AELPGW, or NACG15AELHCW to fit into CUT-G15 option
- Reference page 550 for pricing and details

### Cutout Option for 1 Touch Pivoting Power Grommet

\$25 list upcharge per cutout location

- CUT-G17C Center
- CUT-G17E End
- CUT-G17LR Left & Right

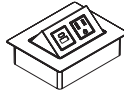


- Reference pages 167-168 for cutout locations of CUT-G17



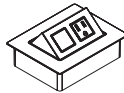
**NACG17AELPGB, NACG17AELPGS, and  
NACG17AELPGW (Sold Separately)**

- Reference page 554 for pricing and details



**NACG17BELPGB, NACG17BELPGS, and  
NACG17BELPGW (Sold Separately)**

- Reference page 554 for pricing and details



**NACG17CELPGB, NACG17CELPGS, and  
NACG17CELPGW (Sold Separately)**

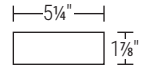
- Reference page 554 pricing and details

NOTE: Interlink IQ units are available in the Accessories section

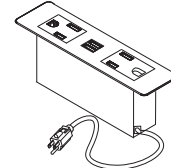
### Cutout Option for G23 Power Grommet

\$25 list upcharge per cutout location

- CUT-G23C Center
- CUT-G23E End
- CUT-G23LR Left, Right



- Reference pages 169-170 for cutout locations of CUT-G23

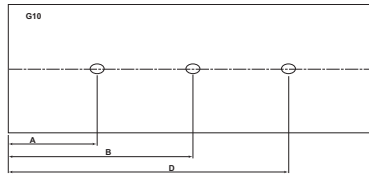


**NACG23ELB (Sold Separately)  
NACG23ELS (Sold Separately)**

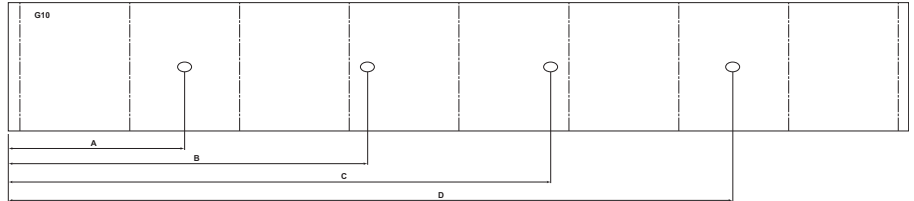
- Must order model NACG23ELB or NACG23ELS to fit into CUT-G23 option
- Reference page 560 pricing and details

# TARVER - GROMMET LOCATIONS ON TOPS

- G10 grommets are shipped installed
- NACG10EL, NACG10AELPG\*, and NACG10BELPG\* electrical grommets are available as a substitute for G10 grommet, if desired



• G10 Round Grommet



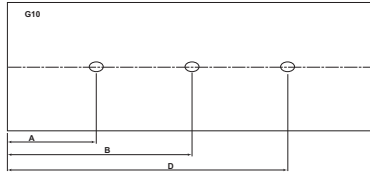
**TABLE LENGTH (IN)**

GROMMET LOCATION/OPTIONS	96"				120"				144"							
	A	B	C	D	A	B	C	D	A	B	C	D				
<b>G10C CENTER</b>	96"	—	47 <sup>1</sup> / <sub>16</sub> "	—	—	120"	—	48 <sup>1</sup> / <sub>4</sub> "	71 <sup>1</sup> / <sub>16</sub> "	—	—	144"	—	57 <sup>1</sup> / <sub>8</sub> "	86 <sup>1</sup> / <sub>16</sub> "	—
<b>G10E END</b>	96"	25 <sup>3</sup> / <sub>16</sub> "	—	—	—	120"	24 <sup>1</sup> / <sub>16</sub> "	—	—	—	—	144"	27 <sup>1</sup> / <sub>16</sub> "	—	—	—
<b>G10LR LEFT, RIGHT</b>	96"	25 <sup>3</sup> / <sub>16</sub> "	—	—	70 <sup>3</sup> / <sub>4</sub> "	120"	24 <sup>1</sup> / <sub>16</sub> "	—	—	94 <sup>7</sup> / <sub>8</sub> "	144"	27 <sup>1</sup> / <sub>16</sub> "	—	—	116 <sup>1</sup> / <sub>16</sub> "	
<b>G10A ALL</b>	96"	25 <sup>3</sup> / <sub>16</sub> "	47 <sup>1</sup> / <sub>16</sub> "	—	70 <sup>3</sup> / <sub>4</sub> "	120"	24 <sup>1</sup> / <sub>16</sub> "	48 <sup>1</sup> / <sub>4</sub> "	71 <sup>1</sup> / <sub>16</sub> "	94 <sup>7</sup> / <sub>8</sub> "	144"	27 <sup>1</sup> / <sub>16</sub> "	57 <sup>1</sup> / <sub>8</sub> "	86 <sup>1</sup> / <sub>16</sub> "	116 <sup>1</sup> / <sub>16</sub> "	
<b>G10CE CENTER, END</b>	96"	25 <sup>3</sup> / <sub>16</sub> "	47 <sup>1</sup> / <sub>16</sub> "	—	—	120"	24 <sup>1</sup> / <sub>16</sub> "	48 <sup>1</sup> / <sub>4</sub> "	—	—	144"	27 <sup>1</sup> / <sub>16</sub> "	57 <sup>1</sup> / <sub>8</sub> "	86 <sup>1</sup> / <sub>16</sub> "	—	
	168"				192"				216"							
<b>G10C CENTER</b>	168"	—	66 <sup>3</sup> / <sub>4</sub> "	100 <sup>1</sup> / <sub>16</sub> "	—	192"	—	76 <sup>1</sup> / <sub>16</sub> "	115 <sup>1</sup> / <sub>16</sub> "	—	216"	—	85 <sup>7</sup> / <sub>8</sub> "	129 <sup>1</sup> / <sub>16</sub> "	—	
<b>G10E END</b>	168"	32 <sup>1</sup> / <sub>2</sub> "	—	—	—	192"	37 <sup>7</sup> / <sub>16</sub> "	—	—	—	216"	42 <sup>1</sup> / <sub>16</sub> "	—	—	—	
<b>G10LR LEFT, RIGHT</b>	168"	32 <sup>1</sup> / <sub>2</sub> "	—	—	135 <sup>1</sup> / <sub>16</sub> "	192"	37 <sup>7</sup> / <sub>16</sub> "	—	—	154 <sup>3</sup> / <sub>8</sub> "	216"	42 <sup>1</sup> / <sub>16</sub> "	—	—	173 <sup>1</sup> / <sub>2</sub> "	
<b>G10A ALL</b>	168"	32 <sup>1</sup> / <sub>2</sub> "	66 <sup>3</sup> / <sub>4</sub> "	100 <sup>1</sup> / <sub>16</sub> "	135 <sup>1</sup> / <sub>16</sub> "	192"	37 <sup>7</sup> / <sub>16</sub> "	76 <sup>1</sup> / <sub>16</sub> "	115 <sup>1</sup> / <sub>16</sub> "	154 <sup>3</sup> / <sub>8</sub> "	216"	42 <sup>1</sup> / <sub>16</sub> "	85 <sup>7</sup> / <sub>8</sub> "	129 <sup>1</sup> / <sub>16</sub> "	173 <sup>1</sup> / <sub>2</sub> "	
<b>G10CE CENTER, END</b>	168"	32 <sup>1</sup> / <sub>2</sub> "	66 <sup>3</sup> / <sub>4</sub> "	100 <sup>1</sup> / <sub>16</sub> "	—	192"	37 <sup>7</sup> / <sub>16</sub> "	76 <sup>1</sup> / <sub>16</sub> "	115 <sup>1</sup> / <sub>16</sub> "	—	216"	42 <sup>1</sup> / <sub>16</sub> "	85 <sup>7</sup> / <sub>8</sub> "	129 <sup>1</sup> / <sub>16</sub> "	—	

TARVER

# GROMMET LOCATIONS ON TOPS - TARVER

- G10 grommets are shipped installed
- NACG10EL, NACG10AELPG\*, and NACG10BELPG\* electrical grommets are available as a substitute for G10 grommet, if desired



- G10 Round Grommet

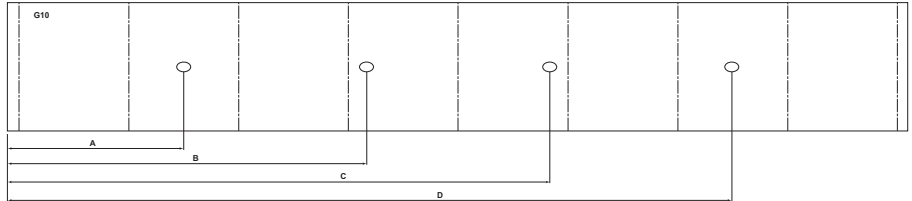
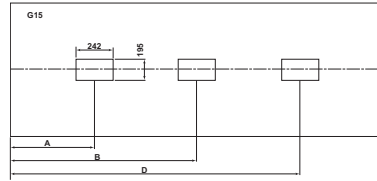


TABLE LENGTH (IN)

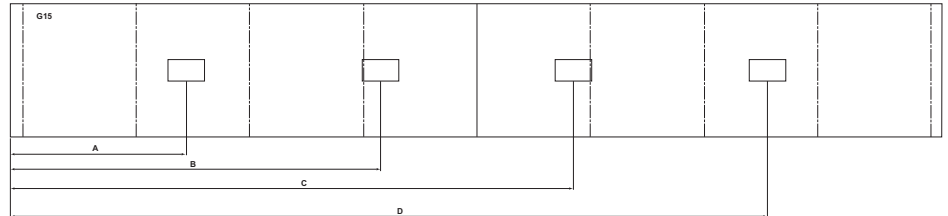
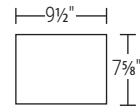
GROMMET LOCATION/OPTIONS	240"				
		A	B	C	D
G10C CENTER					
	240"	—	95 <sup>7</sup> / <sub>16</sub> "	144 <sup>1</sup> / <sub>16</sub> "	—
G10E END		A	B	C	D
	240"	46 <sup>7</sup> / <sub>16</sub> "	—	—	—
G10LR LEFT, RIGHT		A	B	C	D
	240"	46 <sup>7</sup> / <sub>16</sub> "	—	—	192 <sup>1</sup> / <sub>16</sub> "
G10A ALL		A	B	C	D
	240"	46 <sup>7</sup> / <sub>16</sub> "	95 <sup>7</sup> / <sub>16</sub> "	144 <sup>1</sup> / <sub>16</sub> "	192 <sup>1</sup> / <sub>16</sub> "
G10CE CENTER, END		A	B	C	D
	240"	46 <sup>7</sup> / <sub>16</sub> "	95 <sup>7</sup> / <sub>16</sub> "	144 <sup>1</sup> / <sub>16</sub> "	—

# TARVER - GROMMET LOCATIONS ON TOPS

- For 144", 168", 192", 216", and 240" tops, the center grommet location consists of 2 grommet cutouts (upcharge will reflect 2 grommet cutouts)



• CUT-G15 option



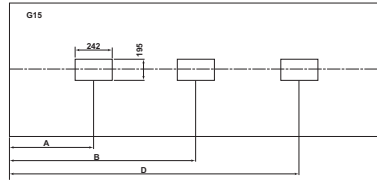
**TABLE LENGTH (IN)**

GROMMET LOCATION/OPTIONS	96"				120"				144"										
	A	B	C	D	A	B	C	D	A	B	C	D							
<b>G15C CENTER</b>	96"	—	47 <sup>1</sup> / <sub>16</sub> "	—	—	—	—	—	120"	—	59 <sup>13</sup> / <sub>16</sub> "	—	—	—	144"	—	56 <sup>3</sup> / <sub>16</sub> "	87 <sup>1</sup> / <sub>4</sub> "	—
<b>G15E END</b>	96"	21 <sup>3</sup> / <sub>8</sub> "	—	—	—	—	—	—	120"	27 <sup>3</sup> / <sub>8</sub> "	—	—	—	—	144"	25 <sup>3</sup> / <sub>8</sub> "	—	—	—
<b>G15LR LEFT, RIGHT</b>	96"	21 <sup>3</sup> / <sub>8</sub> "	—	—	74 <sup>3</sup> / <sub>16</sub> "	120"	27 <sup>3</sup> / <sub>8</sub> "	—	—	92 <sup>1</sup> / <sub>4</sub> "	144"	25 <sup>3</sup> / <sub>8</sub> "	—	—	117 <sup>3</sup> / <sub>8</sub> "				
<b>G15A ALL</b>	96"	21 <sup>3</sup> / <sub>8</sub> "	47 <sup>1</sup> / <sub>16</sub> "	—	74 <sup>3</sup> / <sub>16</sub> "	120"	27 <sup>3</sup> / <sub>8</sub> "	59 <sup>13</sup> / <sub>16</sub> "	—	92 <sup>1</sup> / <sub>4</sub> "	144"	25 <sup>3</sup> / <sub>8</sub> "	56 <sup>3</sup> / <sub>16</sub> "	87 <sup>1</sup> / <sub>4</sub> "	117 <sup>3</sup> / <sub>8</sub> "				
<b>G15CE CENTER, END</b>	96"	21 <sup>3</sup> / <sub>8</sub> "	47 <sup>1</sup> / <sub>16</sub> "	—	—	120"	27 <sup>3</sup> / <sub>8</sub> "	59 <sup>13</sup> / <sub>16</sub> "	—	—	144"	25 <sup>3</sup> / <sub>8</sub> "	56 <sup>3</sup> / <sub>16</sub> "	87 <sup>1</sup> / <sub>4</sub> "	—				
GROMMET LOCATION/OPTIONS	168"				192"				216"										
	A	B	C	D	A	B	C	D	A	B	C	D							
<b>G15C CENTER</b>	168"	—	66 <sup>3</sup> / <sub>8</sub> "	101 <sup>3</sup> / <sub>16</sub> "	—	—	—	—	192"	—	75 <sup>3</sup> / <sub>4</sub> "	115 <sup>5</sup> / <sub>16</sub> "	—	—	216"	—	85 <sup>5</sup> / <sub>16</sub> "	130 <sup>3</sup> / <sub>16</sub> "	—
<b>G15E END</b>	168"	30 <sup>1</sup> / <sub>16</sub> "	—	—	—	—	—	—	192"	35 <sup>1</sup> / <sub>2</sub> "	—	—	—	—	216"	40 <sup>3</sup> / <sub>8</sub> "	—	—	—
<b>G15LR LEFT, RIGHT</b>	168"	30 <sup>1</sup> / <sub>16</sub> "	—	—	137"	192"	35 <sup>1</sup> / <sub>2</sub> "	—	—	156 <sup>3</sup> / <sub>16</sub> "	216"	40 <sup>3</sup> / <sub>8</sub> "	—	—	175 <sup>5</sup> / <sub>16</sub> "				
<b>G15A ALL</b>	168"	30 <sup>1</sup> / <sub>16</sub> "	66 <sup>3</sup> / <sub>8</sub> "	101 <sup>3</sup> / <sub>16</sub> "	137"	192"	35 <sup>1</sup> / <sub>2</sub> "	75 <sup>3</sup> / <sub>4</sub> "	115 <sup>5</sup> / <sub>16</sub> "	156 <sup>3</sup> / <sub>16</sub> "	216"	40 <sup>3</sup> / <sub>8</sub> "	85 <sup>5</sup> / <sub>16</sub> "	130 <sup>3</sup> / <sub>16</sub> "	175 <sup>5</sup> / <sub>16</sub> "				
<b>G15CE CENTER, END</b>	168"	30 <sup>1</sup> / <sub>16</sub> "	66 <sup>3</sup> / <sub>8</sub> "	101 <sup>3</sup> / <sub>16</sub> "	—	192"	35 <sup>1</sup> / <sub>2</sub> "	75 <sup>3</sup> / <sub>4</sub> "	115 <sup>5</sup> / <sub>16</sub> "	—	216"	40 <sup>3</sup> / <sub>8</sub> "	85 <sup>5</sup> / <sub>16</sub> "	130 <sup>3</sup> / <sub>16</sub> "	—				

TARVER

# GROMMET LOCATIONS ON TOPS - TARVER

- For 144", 168", 192", 216", and 240" tops, the center grommet location consists of 2 grommet cutouts (upcharge will reflect 2 grommet cutouts)



- CUT-G15 option

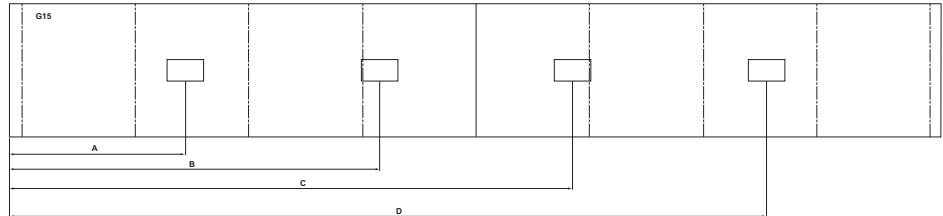
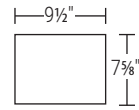


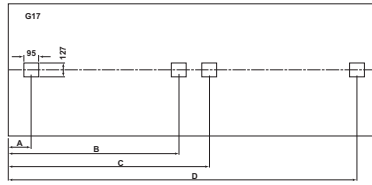
TABLE LENGTH (IN)

GROMMET LOCATION/OPTIONS	240"				
		A	B	C	D
G15C CENTER		A	B	C	D
	240"	—	94"	144 <sup>1</sup> / <sub>16</sub> "	—
G15E END		A	B	C	D
	240"	45 <sup>1</sup> / <sub>16</sub> "	—	—	—
G15LR LEFT, RIGHT		A	B	C	D
	240"	45 <sup>1</sup> / <sub>16</sub> "	—	—	194 <sup>1</sup> / <sub>16</sub> "
G15A ALL		A	B	C	D
	240"	45 <sup>1</sup> / <sub>16</sub> "	94"	144 <sup>1</sup> / <sub>16</sub> "	194 <sup>1</sup> / <sub>16</sub> "
G15CE CENTER, END		A	B	C	D
	240"	45 <sup>1</sup> / <sub>16</sub> "	94"	144 <sup>1</sup> / <sub>16</sub> "	—

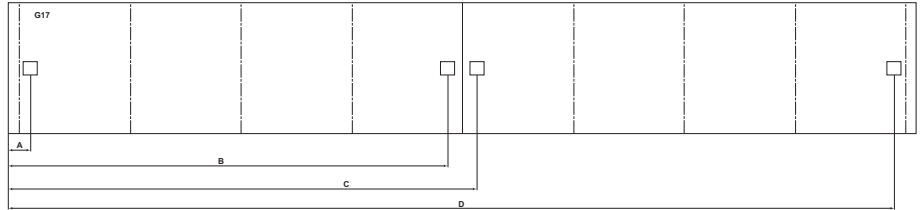
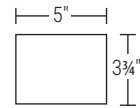


# TARVER - GROMMET LOCATIONS ON TOPS

- For G17, the center grommet location consists of 2 grommet cutouts (upcharge will reflect 2 grommet cutouts)



• CUT-G17 option



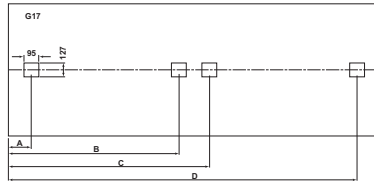
**TABLE LENGTH (IN)**

GROMMET LOCATION/OPTIONS	96"					120"					144"				
		A	B	C	D		A	B	C	D		A	B	C	D
<b>G17L OR G17R LEFT OR RIGHT</b>	96"	23 <sup>3</sup> / <sub>8</sub> "	—	—	—	120"	23 <sup>3</sup> / <sub>8</sub> "	—	—	—	144"	23 <sup>3</sup> / <sub>8</sub> "	—	—	—
<b>G17LR LEFT &amp; RIGHT</b>	96"	23 <sup>3</sup> / <sub>8</sub> "	—	—	72 <sup>1</sup> / <sub>16</sub> "	120"	23 <sup>3</sup> / <sub>8</sub> "	—	—	96"	144"	23 <sup>3</sup> / <sub>8</sub> "	—	—	119 <sup>1</sup> / <sub>16</sub> "
<b>G17C CENTER</b>	96"	—	44"	51 <sup>1</sup> / <sub>8</sub> "	—	120"	—	56"	63 <sup>3</sup> / <sub>8</sub> "	—	144"	—	67 <sup>1</sup> / <sub>16</sub> "	75 <sup>1</sup> / <sub>16</sub> "	—
<b>G17LC OR G17RC LEFT &amp; CENTER OR RIGHT &amp; CENTER</b>	96"	23 <sup>3</sup> / <sub>8</sub> "	44"	51 <sup>1</sup> / <sub>8</sub> "	—	120"	23 <sup>3</sup> / <sub>8</sub> "	56"	63 <sup>3</sup> / <sub>8</sub> "	—	144"	23 <sup>3</sup> / <sub>8</sub> "	67 <sup>1</sup> / <sub>16</sub> "	75 <sup>1</sup> / <sub>16</sub> "	—
<b>G17A LEFT, RIGHT &amp; CENTER</b>	96"	23 <sup>3</sup> / <sub>8</sub> "	44"	51 <sup>1</sup> / <sub>8</sub> "	72 <sup>1</sup> / <sub>16</sub> "	120"	23 <sup>3</sup> / <sub>8</sub> "	56"	63 <sup>3</sup> / <sub>8</sub> "	96"	144"	23 <sup>3</sup> / <sub>8</sub> "	67 <sup>1</sup> / <sub>16</sub> "	75 <sup>1</sup> / <sub>16</sub> "	119 <sup>1</sup> / <sub>16</sub> "
	168"					192"					216"				
<b>G17L OR G17R LEFT OR RIGHT</b>	168"	23 <sup>3</sup> / <sub>8</sub> "	—	—	—	192"	23 <sup>3</sup> / <sub>8</sub> "	—	—	—	216"	23 <sup>3</sup> / <sub>8</sub> "	—	—	—
<b>G17LR LEFT &amp; RIGHT</b>	168"	23 <sup>3</sup> / <sub>8</sub> "	—	—	143 <sup>3</sup> / <sub>8</sub> "	192"	23 <sup>3</sup> / <sub>8</sub> "	—	—	167 <sup>1</sup> / <sub>16</sub> "	216"	23 <sup>3</sup> / <sub>8</sub> "	—	—	191 <sup>3</sup> / <sub>4</sub> "
<b>G17C CENTER</b>	168"	—	79 <sup>1</sup> / <sub>16</sub> "	87 <sup>1</sup> / <sub>16</sub> "	—	192"	—	91 <sup>1</sup> / <sub>8</sub> "	99 <sup>3</sup> / <sub>4</sub> "	—	216"	—	103 <sup>3</sup> / <sub>8</sub> "	111 <sup>3</sup> / <sub>4</sub> "	—
<b>G17LC OR G17RC LEFT &amp; CENTER OR RIGHT &amp; CENTER</b>	168"	23 <sup>3</sup> / <sub>8</sub> "	79 <sup>1</sup> / <sub>16</sub> "	87 <sup>1</sup> / <sub>16</sub> "	—	192"	23 <sup>3</sup> / <sub>8</sub> "	91 <sup>1</sup> / <sub>8</sub> "	99 <sup>3</sup> / <sub>4</sub> "	—	216"	23 <sup>3</sup> / <sub>8</sub> "	103 <sup>3</sup> / <sub>8</sub> "	111 <sup>3</sup> / <sub>4</sub> "	—
<b>G17A LEFT, RIGHT &amp; CENTER</b>	168"	23 <sup>3</sup> / <sub>8</sub> "	79 <sup>1</sup> / <sub>16</sub> "	87 <sup>1</sup> / <sub>16</sub> "	143 <sup>3</sup> / <sub>8</sub> "	192"	23 <sup>3</sup> / <sub>8</sub> "	91 <sup>1</sup> / <sub>8</sub> "	99 <sup>3</sup> / <sub>4</sub> "	167 <sup>1</sup> / <sub>16</sub> "	216"	23 <sup>3</sup> / <sub>8</sub> "	103 <sup>3</sup> / <sub>8</sub> "	111 <sup>3</sup> / <sub>4</sub> "	191 <sup>3</sup> / <sub>4</sub> "

TARVER

# GROMMET LOCATIONS ON TOPS - TARVER

- For G17, the center grommet location consists of 2 grommet cutouts (upcharge will reflect 2 grommet cutouts)



- CUT-G17 option

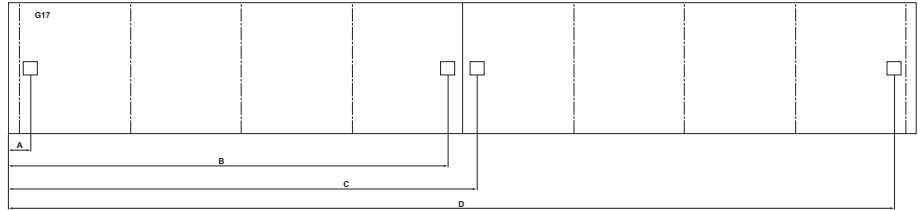
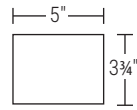
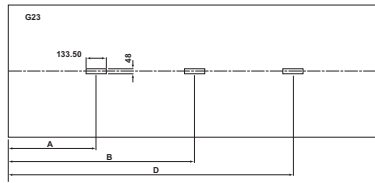


TABLE LENGTH (IN)

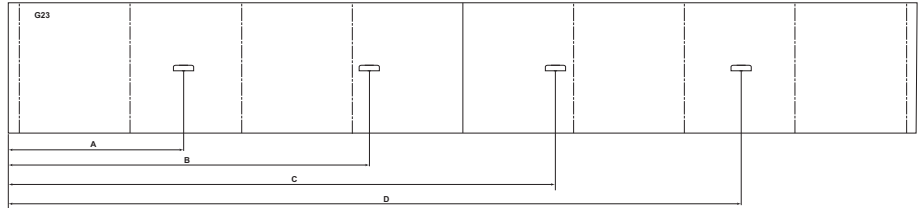
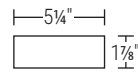
GROMMET LOCATION/OPTIONS	240"				
		A	B	C	D
G17L OR G17R LEFT OR RIGHT		A	B	C	D
	240"	23 <sup>7</sup> / <sub>8</sub> "	—	—	—
G17LR LEFT & RIGHT		A	B	C	D
	240"	23 <sup>7</sup> / <sub>8</sub> "	—	—	215 <sup>1</sup> / <sub>16</sub> "
G17C CENTER		A	B	C	D
	240"	—	115 <sup>3</sup> / <sub>16</sub> "	123 <sup>1</sup> / <sub>16</sub> "	—
G17LC OR G17RC LEFT & CENTER OR RIGHT & CENTER		A	B	C	D
	240"	23 <sup>7</sup> / <sub>8</sub> "	115 <sup>3</sup> / <sub>16</sub> "	123 <sup>1</sup> / <sub>16</sub> "	—
G17A LEFT, RIGHT & CENTER		A	B	C	D
	240"	23 <sup>7</sup> / <sub>8</sub> "	115 <sup>3</sup> / <sub>16</sub> "	123 <sup>1</sup> / <sub>16</sub> "	215 <sup>1</sup> / <sub>16</sub> "

# TARVER - GROMMET LOCATIONS ON TOPS

- For 144", 168", 192", 216", and 240" tops, the center grommet location consists of 2 grommet cutouts (upcharge will reflect 2 grommet cutouts)



• CUT-G23 option



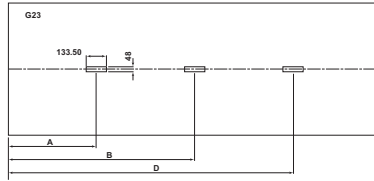
**TABLE LENGTH (IN)**

GROMMET LOCATION/OPTIONS	96"				120"				144"						
		A	B	C	D		A	B	C	D		A	B	C	D
<b>G23C CENTER</b>	96"	—	47 <sup>1</sup> / <sub>16</sub> "	—	—	120"	—	59 <sup>13</sup> / <sub>16</sub> "	—	—	144"	—	57"	86 <sup>13</sup> / <sub>16</sub> "	—
<b>G23E END</b>	96"	22 <sup>1</sup> / <sub>16</sub> "	—	—	—	120"	28 <sup>3</sup> / <sub>8</sub> "	—	—	—	144"	27 <sup>3</sup> / <sub>16</sub> "	—	—	—
<b>G23LR LEFT, RIGHT</b>	96"	22 <sup>1</sup> / <sub>16</sub> "	—	—	73 <sup>3</sup> / <sub>4</sub> "	120"	28 <sup>3</sup> / <sub>8</sub> "	—	—	91 <sup>1</sup> / <sub>16</sub> "	144"	27 <sup>3</sup> / <sub>16</sub> "	—	—	116 <sup>3</sup> / <sub>8</sub> "
<b>G23A ALL</b>	96"	22 <sup>1</sup> / <sub>16</sub> "	47 <sup>1</sup> / <sub>16</sub> "	—	73 <sup>3</sup> / <sub>4</sub> "	120"	28 <sup>3</sup> / <sub>8</sub> "	59 <sup>13</sup> / <sub>16</sub> "	—	91 <sup>1</sup> / <sub>16</sub> "	144"	27 <sup>3</sup> / <sub>16</sub> "	57"	86 <sup>13</sup> / <sub>16</sub> "	116 <sup>3</sup> / <sub>8</sub> "
<b>G23CE CENTER, END</b>	96"	22 <sup>1</sup> / <sub>16</sub> "	47 <sup>1</sup> / <sub>16</sub> "	—	—	120"	28 <sup>3</sup> / <sub>8</sub> "	59 <sup>13</sup> / <sub>16</sub> "	—	—	144"	27 <sup>3</sup> / <sub>16</sub> "	57"	86 <sup>13</sup> / <sub>16</sub> "	—
	168"				192"				216"						
<b>G23C CENTER</b>	168"	—	66 <sup>6</sup> / <sub>16</sub> "	101 <sup>1</sup> / <sub>8</sub> "	—	192"	—	76 <sup>1</sup> / <sub>8</sub> "	115 <sup>1</sup> / <sub>2</sub> "	—	216"	—	85 <sup>1</sup> / <sub>16</sub> "	129 <sup>3</sup> / <sub>8</sub> "	—
<b>G23E END</b>	168"	31 <sup>1</sup> / <sub>16</sub> "	—	—	—	192"	36 <sup>3</sup> / <sub>4</sub> "	—	—	—	216"	41 <sup>1</sup> / <sub>16</sub> "	—	—	—
<b>G23LR LEFT, RIGHT</b>	168"	31 <sup>1</sup> / <sub>16</sub> "	—	—	135 <sup>3</sup> / <sub>4</sub> "	192"	36 <sup>3</sup> / <sub>4</sub> "	—	—	154 <sup>7</sup> / <sub>8</sub> "	216"	41 <sup>1</sup> / <sub>16</sub> "	—	—	174 <sup>1</sup> / <sub>16</sub> "
<b>G23A ALL</b>	168"	31 <sup>1</sup> / <sub>16</sub> "	66 <sup>6</sup> / <sub>16</sub> "	101 <sup>1</sup> / <sub>8</sub> "	135 <sup>3</sup> / <sub>4</sub> "	192"	36 <sup>3</sup> / <sub>4</sub> "	76 <sup>1</sup> / <sub>8</sub> "	115 <sup>1</sup> / <sub>2</sub> "	154 <sup>7</sup> / <sub>8</sub> "	216"	41 <sup>1</sup> / <sub>16</sub> "	85 <sup>1</sup> / <sub>16</sub> "	129 <sup>3</sup> / <sub>8</sub> "	174 <sup>1</sup> / <sub>16</sub> "
<b>G23CE CENTER, END</b>	168"	31 <sup>1</sup> / <sub>16</sub> "	66 <sup>6</sup> / <sub>16</sub> "	101 <sup>1</sup> / <sub>8</sub> "	—	192"	36 <sup>3</sup> / <sub>4</sub> "	76 <sup>1</sup> / <sub>8</sub> "	115 <sup>1</sup> / <sub>2</sub> "	—	216"	41 <sup>1</sup> / <sub>16</sub> "	85 <sup>1</sup> / <sub>16</sub> "	129 <sup>3</sup> / <sub>8</sub> "	—

TARVER

# GROMMET LOCATIONS ON TOPS - TARVER

- For 144", 168", 192", 216", and 240" tops, the center grommet location consists of 2 grommet cutouts (upcharge will reflect 2 grommet cutouts)



- CUT-G23 option

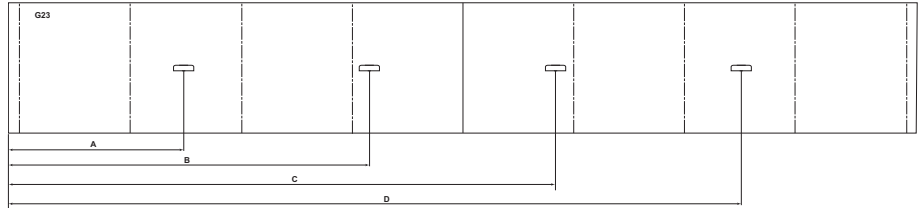
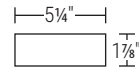


TABLE LENGTH (IN)

GROMMET LOCATION/OPTIONS	240"				
		A	B	C	D
G23C CENTER					
	240"	—	95 <sup>5</sup> / <sub>16</sub> "	144 <sup>1</sup> / <sub>4</sub> "	—
G23E END					
	240"	46 <sup>5</sup> / <sub>16</sub> "	—	—	—
G23LR LEFT, RIGHT					
	240"	46 <sup>5</sup> / <sub>16</sub> "	—	—	193 <sup>3</sup> / <sub>16</sub> "
G23A ALL					
	240"	46 <sup>5</sup> / <sub>16</sub> "	95 <sup>5</sup> / <sub>16</sub> "	144 <sup>1</sup> / <sub>4</sub> "	193 <sup>3</sup> / <sub>16</sub> "
G23CE CENTER, END					
	240"	46 <sup>5</sup> / <sub>16</sub> "	95 <sup>5</sup> / <sub>16</sub> "	144 <sup>1</sup> / <sub>4</sub> "	—

**PRODUCT SPECIFICATIONS**

- Shipped KD
- Legs made of metal and solid wood
- Reference pages 163-170 for grommet and cutout locations
- Grommet cutout is only available in Center location.

**TO ORDER, SPECIFY:**

1. Model Number
2. Grommet
3. Top Finish/Laminate
4. Base Finish
5. Paint

**SAMPLE MODEL NUMBER:**

90N4229TRDTW CUT-G17C EW 462 462  
 • See page 161 for all options available in Tarver

**ROUND TOP  
TRESTLE BASE  
WORKSURFACE HEIGHT**



MODEL NO./DESCRIPTION	LIST PRICE	DIMENSIONS					CARTONED WEIGHT	CUBIC FEET
		D	W	H	A	KW		
<b>42" ROUND 1 1/8" TOP THICKNESS</b>		<b>DI</b>						
90N4229TRDTW Wood	\$ 3869	42 1/16	—	29 1/16	—	—	86 lbs.	20.1
90N4229TRDTL Laminate	3661	42 1/16	—	29 1/16	—	—	86 lbs.	20.7
<b>48" ROUND</b>								
90N4829TRDTW Wood	\$ 4181	48 1/16	—	29 1/16	—	—	103 lbs.	21.1
90N4829TRDTL Laminate	3754	48 1/16	—	29 1/16	—	—	103 lbs.	21.4
<b>54" ROUND</b>								
90N5429TRDTW Wood	\$ 4493	54	—	29 1/16	—	—	153 lbs.	37.9
90N5429TRDTL Laminate	4181	54	—	29 1/16	—	—	153 lbs.	37.9
<b>60" ROUND</b>								
90N6029TRDTW Wood	\$ 4805	58 1/16	—	29 1/16	—	—	213 lbs.	39.3
90N6029TRDTL Laminate	4493	58 1/16	—	29 1/16	—	—	213 lbs.	39.3

• G10 grommet option not available

**ROUND TOP  
TRESTLE BASE  
COUNTER HEIGHT**



<b>42" ROUND 1 1/8" TOP THICKNESS</b>		<b>DI</b>						
90N4235TRDTW Wood	\$ 4449	42 1/16	—	35 1/16	—	—	92 lbs.	25.2
90N4235TRDTL Laminate	4210	42 1/16	—	35 1/16	—	—	92 lbs.	25.8
<b>48" ROUND</b>								
90N4835TRDTW Wood	\$ 4808	48 1/16	—	35 1/16	—	—	109 lbs.	26.2
90N4835TRDTL Laminate	4318	48 1/16	—	35 1/16	—	—	109 lbs.	26.5

• G10 grommet option not available

**ROUND TOP  
TRESTLE BASE  
BAR HEIGHT**



<b>42" ROUND 1 1/8" TOP THICKNESS</b>		<b>DI</b>						
90N4241TRDTW Wood	\$ 4894	42 1/16	—	41 3/8	—	—	159 lbs.	29.7
90N4241TRDTL Laminate	4631	42 1/16	—	41 3/8	—	—	159 lbs.	30.3
<b>48" ROUND</b>								
90N4841TRDTW Wood	\$ 5288	48 1/16	—	41 3/8	—	—	219 lbs.	30.7
90N4841TRDTL Laminate	4750	48 1/16	—	41 3/8	—	—	219 lbs.	31.0

• G10 grommet option not available

# TARVER

## PRODUCT SPECIFICATIONS

- Shipped KD
- Legs made of metal and solid wood
- Reference pages 163-170 for grommet and cutout locations
- Grommet cutout is only available in Center location.

## TO ORDER, SPECIFY:

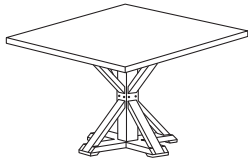
1. Model Number
2. Grommet
3. Top Finish/Laminate
4. Base Finish
5. Paint

## SAMPLE MODEL NUMBER:

90N606029TSQTL X G1012 423 423

- See page 161 for all options available in Tarver

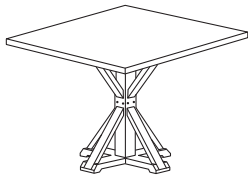
### SQUARE TOP TRESTLE BASE WORKSURFACE HEIGHT



MODEL NO./DESCRIPTION	LIST PRICE	DIMENSIONS					CARTONED CUBIC	
		D	W	H	A	KW	WEIGHT	FEET
<b>42" SQUARE 1 1/8" TOP THICKNESS</b>								
90N424229TSQTW	\$ 3869	42 1/16	42 1/16	29 1/16	—	—	112 lbs.	20.7
90N424229TSQTL	3661	42 1/16	42 1/16	29 1/16	—	—	112 lbs.	20.7
<b>48" SQUARE</b>								
90N484829TSQTW	\$ 4181	48 1/16	48 1/16	29 1/16	—	—	129 lbs.	21.4
90N484829TSQTL	3754	48 1/16	48 1/16	29 1/16	—	—	129 lbs.	21.4
<b>54" SQUARE</b>								
90N545429TSQTW	\$ 4493	54	54	29 1/16	—	—	174 lbs.	37.9
90N545429TSQTL	4181	54	54	29 1/16	—	—	174 lbs.	37.9
<b>60" SQUARE</b>								
90N606029TSQTW	\$ 4805	58 3/16	58 3/16	29 1/16	—	—	203 lbs.	39.3
90N606029TSQTL	4493	58 3/16	58 3/16	29 1/16	—	—	203 lbs.	39.3

- G10 grommet option not available

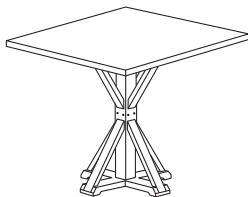
### SQUARE TOP TRESTLE BASE COUNTER HEIGHT



<b>42" SQUARE 1 1/8" TOP THICKNESS</b>								
90N424235TSQTW	\$ 4449	42 1/16	42 1/16	35 1/16	—	—	118 lbs.	25.8
90N424235TSQTL	4210	42 1/16	42 1/16	35 1/16	—	—	118 lbs.	25.8
<b>48" SQUARE</b>								
90N484835TSQTW	\$ 4808	48 1/16	48 1/16	35 1/16	—	—	135 lbs.	26.5
90N484835TSQTL	4318	48 1/16	48 1/16	35 1/16	—	—	135 lbs.	26.5

- G10 grommet option not available

### SQUARE TOP TRESTLE BASE BAR HEIGHT



<b>42" SQUARE 1 1/8" TOP THICKNESS</b>								
90N424241TSQTW	\$ 4894	42 1/16	42 1/16	41 3/8	—	—	180 lbs.	30.3
90N424241TSQTL	4631	42 1/16	42 1/16	41 3/8	—	—	180 lbs.	30.3
<b>48" SQUARE</b>								
90N484841TSQTW	\$ 5288	48 1/16	48 1/16	41 3/8	—	—	209 lbs.	31.0
90N484841TSQTL	4750	48 1/16	48 1/16	41 3/8	—	—	209 lbs.	31.0

- G10 grommet option not available

**PRODUCT SPECIFICATIONS**

- Shipped KD
- Legs made of metal and solid wood
- Reference pages 163-170 for grommet and cutout locations

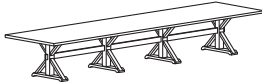
**TO ORDER, SPECIFY:**

1. Model Number
2. Grommet
3. Top Finish/Laminate
4. Base Finish
5. Paint

**SAMPLE MODEL NUMBER:**

90N4814429TRTTL CUT-G17A DW DW EM  
 • See page 161 for all options available in Tarver

**RECTANGLE TOP  
 TRESTLE BASE  
 WORKSURFACE HEIGHT**



MODEL NO./DESCRIPTION	LIST PRICE	DIMENSIONS					CARTONED WEIGHT	CUBIC FEET
		D	W	H	A	KW		
<b>48" x 96" 1 1/2" TOP THICKNESS</b>								
90N489629TRTTW Wood	\$ 7244	48 1/16	95 7/8	29 1/16	—	—	302 lbs.	17.4
90N489629TRTTL Laminate	6645	48 1/16	95 7/8	29 1/16	—	—	302 lbs.	17.4
<b>48" x 120"</b>								
90N4812029TRTTW Wood	\$ 10095	48 1/16	119 13/16	29 1/16	—	—	382 lbs.	23.7
90N4812029TRTTL Laminate	9648	48 1/16	119 13/16	29 1/16	—	—	382 lbs.	23.7
<b>48" x 144"</b>								
90N4814429TRTTW Wood	\$ 11386	48 1/16	143 3/4	29 1/16	—	—	440 lbs.	25.9
90N4814429TRTTL Laminate	10849	48 1/16	143 3/4	29 1/16	—	—	440 lbs.	26.0
<b>48" x 168"</b>								
90N4816829TRTTW Wood	\$ 13812	48 1/16	167 11/16	29 1/16	—	—	527 lbs.	31.9
90N4816829TRTTL Laminate	13308	48 1/16	167 11/16	29 1/16	—	—	527 lbs.	31.9
<b>48" x 192"</b>								
90N4819229TRTTW Wood	\$ 14848	48 1/16	191 7/8	29 1/16	—	—	582 lbs.	34.1
90N4819229TRTTL Laminate	14360	48 1/16	191 7/8	29 1/16	—	—	582 lbs.	34.1
<b>48" x 216"</b>								
90N4821629TRTTW Wood	\$ 15891	48 1/16	215 5/16	29 1/16	—	—	670 lbs.	22.5
90N4821629TRTTL Laminate	15424	48 1/16	215 5/16	29 1/16	—	—	670 lbs.	22.5
<b>48" x 240"</b>								
90N4824029TRTTW Wood	\$ 16931	48 1/16	239 1/2	29 1/16	—	—	719 lbs.	23.1
90N4824029TRTTL Laminate	16488	48 1/16	239 1/2	29 1/16	—	—	719 lbs.	23.1

- 96" wide tops use 2 bases
- 120" and 144" wide tops use 3 bases
- 168", 192", 216", and 240" wide tops use 4 bases
- 120", 144", 168", and 192" wide tops are 2 piece tops
- 216" and 240" wide tops are 3 piece tops
- Almond, Portobello, Sable, and Sonoma veneer grain pattern will not match on multi-piece conference tops

# TARVER

## PRODUCT SPECIFICATIONS

- Shipped KD
- Legs made of metal and solid wood
- Reference pages 163-170 for grommet and cutout locations

## TO ORDER, SPECIFY:

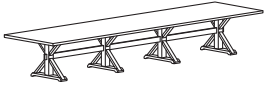
1. Model Number
2. Grommet
3. Top Finish/Laminate
4. Base Finish
5. Paint

## SAMPLE MODEL NUMBER:

90N6019229TRTTW CUT-17LR ERO 461 461

- See page 161 for all options available in Tarver

### RECTANGLE TOP TRESTLE BASE WORKSURFACE HEIGHT (CONTINUED)



MODEL NO./DESCRIPTION	LIST PRICE	DIMENSIONS					CARTONED WEIGHT	CUBIC FEET
		D	W	H	A	KW		
<b>60" x 144" 1 1/2" TOP THICKNESS</b>								
90N6014429TRTTW Wood	\$ 14556	58 1/16	143 3/4	29 7/16	—	—	535 lbs.	26.7
90N6014429TRTTL Laminate	13779	58 1/16	143 3/4	29 7/16	—	—	535 lbs.	35.7
<b>60" x 168"</b>								
90N6016829TRTTW Wood	\$ 17703	58 1/16	167 11/16	29 7/16	—	—	605 lbs.	34.5
90N6016829TRTTL Laminate	16936	58 1/16	167 11/16	29 7/16	—	—	605 lbs.	45.7
<b>60" x 192"</b>								
90N6019229TRTTW Wood	\$ 18983	58 1/16	191 1/8	29 7/16	—	—	702 lbs.	38.0
90N6019229TRTTL Laminate	18228	58 1/16	191 1/8	29 7/16	—	—	702 lbs.	52.5
<b>60" x 216"</b>								
90N6021629TRTTW Wood	\$ 20269	58 1/16	215 1/16	29 7/16	—	—	813 lbs.	34.0
90N6021629TRTTL Laminate	19529	58 1/16	215 1/16	29 7/16	—	—	813 lbs.	54.7
<b>60" x 240"</b>								
90N6024029TRTTW Wood	\$ 21553	58 1/16	239 1/2	29 7/16	—	—	874 lbs.	35.2
90N6024029TRTTL Laminate	20829	58 1/16	239 1/2	29 7/16	—	—	874 lbs.	57.9

- 144" wide tops use 3 bases
- 168", 192", 216", and 240" wide tops use 4 bases
- 144" wide tops are 2 piece tops
- 168", 192", 216", and 240" wide tops are 3 piece tops
- Almond, Portobello, Sable, and Sonoma veneer grain pattern will not match on multi-piece conference tops



**PRODUCT SPECIFICATIONS**

- Shipped KD
- Legs made of metal and solid wood
- Reference pages 163-170 for grommet and cutout locations

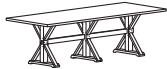
**TO ORDER, SPECIFY:**

1. Model Number
2. Grommet
3. Top Finish/Laminate
4. Base Finish
5. Paint

**SAMPLE MODEL NUMBER:**

90N489641TRTTW X PTRO PTRO 463  
 • See page 161 for all options available in Tarver

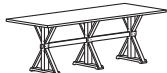
**RECTANGLE TOP  
TRESTLE BASE  
COUNTER HEIGHT**



MODEL NO./DESCRIPTION	LIST PRICE	DIMENSIONS					CARTONED WEIGHT	CUBIC FEET
		D	W	H	A	KW		
<b>48" x 96" 1 1/8" TOP THICKNESS</b>								
90N489635TRTTW Wood	\$ 7606	48 1/16	95 7/8	35 1/16	—	—	317 lbs.	19.2
90N489635TRTTL Laminate	6977	48 1/16	95 7/8	35 1/16	—	—	317 lbs.	19.2
<b>48" x 120"</b>								
90N4812035TRTTW Wood	\$ 10600	48 1/16	119 1/16	35 1/16	—	—	397 lbs.	26.4
90N4812035TRTTL Laminate	10131	48 1/16	119 1/16	35 1/16	—	—	397 lbs.	26.6

- 96" wide tops use 2 bases
- 120" wide tops use 3 bases
- 96" wide tops are 1 piece tops
- 120" wide tops are 2 piece tops
- Almond, Portobello, Sable, and Sonoma veneer grain pattern will not match on multi-piece conference tops

**RECTANGLE TOP  
TRESTLE BASE  
BAR HEIGHT**



MODEL NO./DESCRIPTION	LIST PRICE	DIMENSIONS					CARTONED WEIGHT	CUBIC FEET
		D	W	H	A	KW		
<b>48" x 96" 1 1/8" TOP THICKNESS</b>								
90N489641TRTTW Wood	\$ 11956	48 1/16	95 7/8	41 3/8	—	—	319 lbs.	20.8
90N489641TRTTL Laminate	11391	48 1/16	95 7/8	41 3/8	—	—	319 lbs.	23.0
<b>48" x 120"</b>								
90N4812041TRTTW Wood	\$ 14503	48 1/16	119 1/16	41 3/8	—	—	409 lbs.	28.8
90N4812041TRTTL Laminate	13973	48 1/16	119 1/16	41 3/8	—	—	409 lbs.	29.0

- 96" wide tops use 2 bases
- 120" wide tops use 3 bases
- 96" wide tops are 1 piece tops
- 120" wide tops are 2 piece tops
- Almond, Portobello, Sable, and Sonoma veneer grain pattern will not match on multi-piece conference tops

# TARVER

## PRODUCT SPECIFICATIONS

- Legs made of metal and solid wood
- End and Magazine Tables ship assembled

## TO ORDER, SPECIFY:

1. Model Number
2. Top Finish/Laminate
3. Base Finish
4. Paint

## SAMPLE MODEL NUMBER:

90N2421ENL 478 461 462  
 90N2448MGW PBRO 405 462

- See page 161 for all options available in Tarver

	MODEL NO./DESCRIPTION	LIST PRICE	DIMENSIONS					CARTONED WEIGHT	CUBIC FEET
			D	W	H	A	KW		
<b>END TABLE TRESTLE BASE</b>	90N2421ENW Wood	\$ 1867	24	24	22 $\frac{3}{4}$	—	—	60 lbs.	12.8
	90N2421ENL Laminate	1768	24	24	22 $\frac{3}{4}$	—	—	60 lbs.	12.8



- No grommet cutouts available
- 1 $\frac{1}{2}$ " thick tops

## MAGAZINE TABLE TRESTLE BASE



90N2448MGW Wood	\$ 2387	24	48 $\frac{1}{16}$	16 $\frac{3}{4}$	—	—	83 lbs.	18.8
90N2448MGL Laminate	2288	24	48 $\frac{1}{16}$	16 $\frac{3}{4}$	—	—	83 lbs.	18.8

- No grommet cutouts available
- 1 $\frac{1}{2}$ " thick tops

**PRODUCT SPECIFICATIONS**

- Shipped KD
- Legs made of solid wood

**TO ORDER, SPECIFY:**

1. Model Number
2. Paint
3. Finish
4. Base Finish

**SAMPLE MODEL NUMBER:**

90N3072MBMW 461 AD ADRO  
 • See page 161 for all options available in Tarver

MODEL NO./DESCRIPTION	LIST PRICE	DIMENSIONS					CARTONED WEIGHT	CUBIC FEET
		D	W	H	A	KW		
<b>MOBILE MARKER BOARD</b>	\$ 3380	28	29 <sup>1</sup> / <sub>16</sub>	72	—	—	97 lbs.	23.0



- Dry erase writing surface is approximately 26" wide x 36½" high
- Marker board is approx 35" above fixed floor
- Tray provides lip to keep markers in place
- 4 braking casters
- To specify select paint for top metal divider, finish for horizontal surface, and finish for solid wood base

# TARVER

## PRODUCT SPECIFICATIONS

- Shipped assembled

## TO ORDER, SPECIFY:

1. Model Number
2. Finish/Laminate
3. Hardware Paint
4. Paint

## SAMPLE MODEL NUMBER:

90N2436MUCL SK MB 423

- See page 161 for all options available in Tarver

	MODEL NO./DESCRIPTION	LIST PRICE	DIMENSIONS					CARTONED WEIGHT	CUBIC FEET
			D	W	H	A	KW		
<b>MOBILE UTILITY CART</b>	90N2436MUCW Wood	\$ 3640	23 <sup>3</sup> / <sub>16</sub>	41 <sup>3</sup> / <sub>16</sub>	35 <sup>7</sup> / <sub>16</sub>	—	—	160 lbs.	26.8
	90N2436MUCL Laminate	2860	23 <sup>3</sup> / <sub>16</sub>	41 <sup>3</sup> / <sub>16</sub>	35 <sup>7</sup> / <sub>16</sub>	—	—	160 lbs.	26.8



- Top width is 36"
- 4 braking casters
- One adjustable shelf behind hinged doors
- Doors are non-locking

**PRODUCT SPECIFICATIONS**

- Shipped assembled

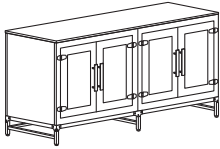
**TO ORDER, SPECIFY:**

1. Model Number
2. Finish/Laminate
3. Hardware Paint

**SAMPLE MODEL NUMBER:**

90N246035CCSL G1006 MB

- See page 161 for all options available in Tarver

	MODEL NO./DESCRIPTION	LIST PRICE	DIMENSIONS			A	KW	CARTONED WEIGHT	CUBIC FEET
			D	W	H				
	<b>48" 1 1/8" TOP THICKNESS</b>								
	90N244835CCSW	Wood	\$ 6974	24	48 1/16	35	—	—	184 lbs. 33.0
	90N244835CCSL	Laminate	5640	24	48 1/16	35	—	—	184 lbs. 33.0
	<ul style="list-style-type: none"> <li>• Metal base height is 6 1/16"</li> <li>• Grommet option not available</li> <li>• Features an adjustable shelf behind each set of doors</li> <li>• Features a fully finished back</li> <li>• Doors are non-locking</li> <li>• Inside dimension of storage section is 21 1/16"D x 19 7/8"W x 23 3/16"H</li> </ul>								
	<b>60" 1 1/8" TOP THICKNESS</b>								
	90N246035CCSW	Wood	\$ 7130	24	60	35	—	—	250 lbs. 40.3
	90N246035CCSL	Laminate	5796	24	60	35	—	—	250 lbs. 40.3
	<ul style="list-style-type: none"> <li>• Metal base height is 6 1/16"</li> <li>• Grommet option not available</li> <li>• Features an adjustable shelf behind each set of doors</li> <li>• Features a fully finished back</li> <li>• Doors are non-locking</li> <li>• Inside dimension of storage section is 21 1/16"D x 25 7/8"W x 23 3/16"H</li> </ul>								
	<b>72" 1 1/8" TOP THICKNESS</b>								
	90N247235CCSW	Wood	\$ 7286	24	71 1/16	35	—	—	286 lbs. 47.7
90N247235CCSL	Laminate	5952	24	71 1/16	35	—	—	286 lbs. 47.7	
<ul style="list-style-type: none"> <li>• Metal base height is 6 1/16"</li> <li>• Grommet option not available</li> <li>• Features an adjustable shelf behind each set of doors</li> <li>• Features a fully finished back</li> <li>• Doors are non-locking</li> <li>• Inside dimension of storage section is 21 1/16"D x 31 7/8"W x 23 3/16"H</li> </ul>									



